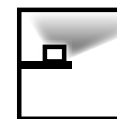
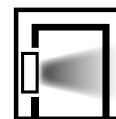
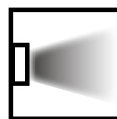


# PROFILED

DISPONIBILE DI COLORE BIANCO  
/ AVAILABLE IN WHITE COLOR

Garanzia  
novalux  
3  
anni  
years



26

Profili dissipanti obbligatori per strip LED (non inclusa) per installazione singola o a fila continua, a plafone, parete, "veletta", per incasso e ad "angolo".

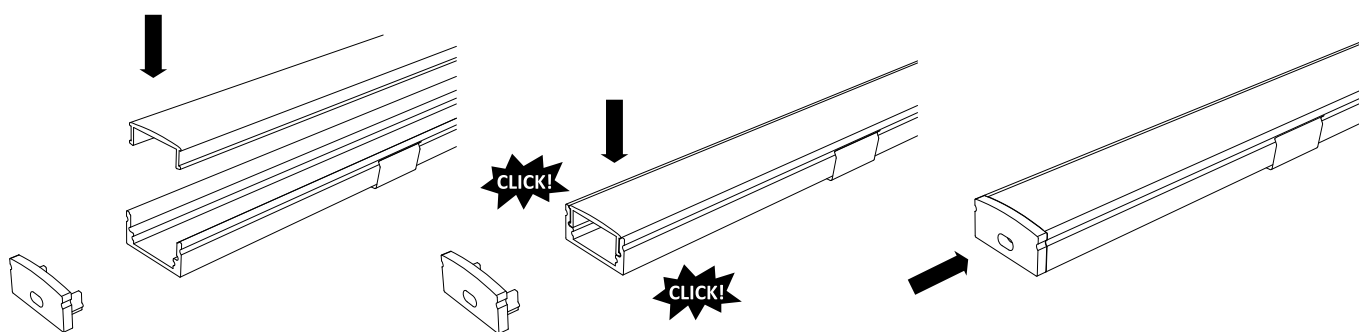
#### Materiali

Profilo dissipante, in lega di alluminio anodizzata naturale o verniciata a polvere bianca; testate di chiusura in polimero termoplastico; schermo di protezione in PMMA trasparente o satinato a seconda delle versioni.

Dissipating profiles compulsory for strip LED (not included) for installation in stand-alone or in continuous lines, for ceiling, or wall surface installation for coves, recessed or for installation on corner.

#### Materials

Dissipating profile, made of anodized aluminium alloy, natural finish or white powder coated; end caps made of thermoplastic polymer; protection screen made of PMMA, transparent or satin finish (depending on the version).



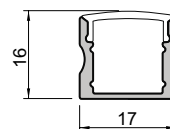
**PROFILED KIT H16** profilo dissipante di lunghezza 2 metri, schermo opale ad inserimento a scatto, testate di chiusura e n°4 staffe di fissaggio inclusi. Strip LED e alimentatore 24Vdc da ordinare a parte.

**PROFILED KIT H16** dissipating profile length 2 meters, complete with opal diffuser for snap-in installation, end caps and nos.4 fixing brackets. LED strip and driver 24Vdc to be ordered separately.

Codice/Code	L (mm)	Diffusore/Diffuser
<b>16301.96</b>	2000	Opale/Opal



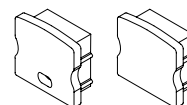
■ \_96 - Allum. anodizzato/Anodized alum.



**ACCESSORI NECESSARI PER L'UTILIZZO DI SEZIONI DI PROFILED RICAVATE DAI PROFILED KIT**  
**NECESSARY ACCESSORY FOR THE USE OF A SECTION OF PROFILED, OBTAINED FROM PROFILED KIT**

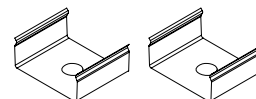
Coppia di testate di chiusura per H16  
 Pair of end caps H16

Codice/Code
<b>16302.99</b>



Coppia di staffe di fissaggio per H16/H9  
 Pair of fixing brackets for H16/H9

Codice/Code
<b>15213.99</b>



**PROFILED KIT H9** profilo dissipante di lunghezza 2 metri, schermo opale o trasparente ad inserimento a scatto, testate di chiusura e n°4 staffe di fissaggio inclusi. Strip LED e alimentatore 24Vdc da ordinare a parte.

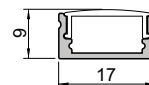
**PROFILED KIT H9** dissipating profile length 2 meters, complete with opal or transparent diffuser for snap-in installation, end caps and nos.4 fixing brackets. LED strip and driver 24Vdc to be ordered separately.

Codice/Code	L (mm)	Diffusore/Diffuser
<b>15201._</b>	2000	Opale/Opal
<b>15202._</b>	2000	Trasparente/Transparent



□ \_01 - Bianco/White

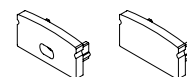
■ \_96 - Allum. anodizzato/Anodized alum.



**ACCESSORI NECESSARI PER L'UTILIZZO DI SEZIONI DI PROFILED RICAVATE DAI PROFILED KIT**  
**NECESSARY ACCESSORY FOR THE USE OF A SECTION OF PROFILED, OBTAINED FROM PROFILED KIT**

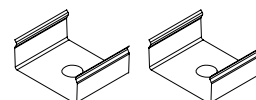
Coppia di testate di chiusura per H9  
 Pair of end caps H9

Codice/Code
<b>15206.99</b>





Coppia di staffe di fissaggio per H16/H9  
 Pair of fixing brackets for H16/H9

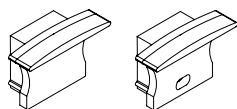
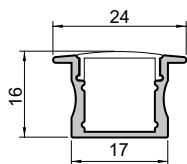
Codice/Code
<b>15213.99</b>





 ..01 - Bianco/White

 ..96 - Allum. anodizzato/Anodized alum.



**PROFILED KIT INCASSO H16** profilo dissipante di lunghezza 2 metri, schermo opale o trasparente ad inserimento a scatto e testate di chiusura inclusi. Strip LED e alimentatore 24Vdc da ordinare a parte.

**PROFILED RECESSED KIT H16** dissipating profile length 2 meters, complete with opal or transparent diffuser for snap-in installation and end caps. LED strip and driver 24Vdc to be ordered separately.

Codice/Code	L (mm)	Diffusore/Diffuser
<b>15203.</b> _	2000	Opale/Opal
<b>15204.</b> _	2000	Trasparente/Transparent


**ACCESSORI NECESSARI PER L'UTILIZZO DI SEZIONI DI PROFILED RICAVATE DAI PROFILED KIT**  
**NECESSARY ACCESSORY FOR THE USE OF A SECTION OF PROFILED, OBTAINED FROM PROFILED KIT**

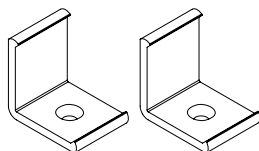
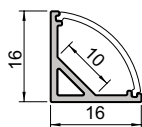
Coppia di testate di chiusura per incasso  
 Pair of end caps for recessed installation

Codice/Code

**15208.99**



 ..96 - Allum. anodizzato/Anodized alum.



**PROFILED KIT AD 'ANGOLO' H16** profilo dissipante di lunghezza 2 metri, schermo opale ad inserimento a scatto, testate di chiusura e n°4 staffe di fissaggio inclusi. Strip LED e alimentatore 24Vdc da ordinare a parte.

**PROFILED CORNER KIT H16** dissipating profile length 2 meters, complete with opal diffuser for snap-in installation, end caps and nos.4 fixing brackets. LED strip and driver 24Vdc to be ordered separately.

Codice/Code	L (mm)	Diffusore/Diffuser
<b>15205.96</b>	2000	Opale/Opal

**ACCESSORI NECESSARI PER L'UTILIZZO DI SEZIONI DI PROFILED RICAVATE DAI PROFILED KIT**  
**NECESSARY ACCESSORY FOR THE USE OF A SECTION OF PROFILED, OBTAINED FROM PROFILED KIT**

Coppia di testate di chiusura per angolare H16  
 Pair of end caps for H16 corner

Codice/Code

**15210.99**

Coppia di staffe di fissaggio per angolare H16  
 Pair of fixing brackets for H16 corner

Codice/Code

**15212.99**