



PROFILED

Gamma completa di profili per strip LED: ad incasso, in appoggio o angolare. I Profiled consentono di realizzare nicchie e gole luminose, velette e linee di luce diretta, adattandosi di volta in volta ad una nuova soluzione compositiva.

Complete range of profiles for LED strip: recessed, surface mounted or angular. The Profiled allows to create niches and light coves, veils and direct light lines, each time adapting itself to a new compositional solution.



PROFILED

- **LUNGHEZZA TAGLIABILE A MISURA**
LENGTH TO BE CUT TO MEASURE ON SITE
- **VARIETÀ DI SOLUZIONI COMPOSITIVE**
MANY COMPOSITIONAL SOLUTIONS

||| 16 mm

||| 17 mm

||| 17 mm

||| 10 mm

||| 25 mm

||| 27 mm



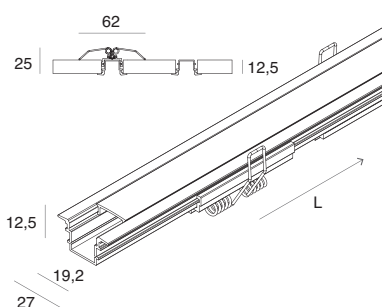
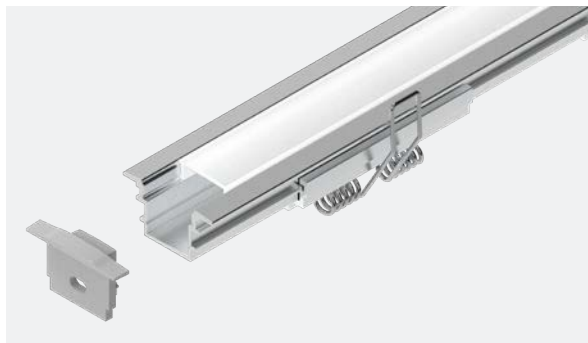
||| 20 mm



PROFILED INCASSO H12

Profilo dissipante per Strip LED in lega di alluminio anodizzata naturale o verniciata bianca, testate di chiusura in polimero termoplastico, schermo diffusore ad inserimento a scatto in PMMA opale.
Schermo diffusore, testate di chiusura e n°2 molle di fissaggio scorrevoli sul profilo inclusi, Strip LED e alimentatore 24Vdc da ordinare a parte.
Idoneo per controsoffitto di spessore max. 15 mm.

Dissipating profile for Strip LED made of anodized aluminium alloy, natural finish or white powder coated, end caps made of thermoplastic polymer, screen made of opal finish PMMA.
Diffuser, end caps and n°2 sliding fixing springs included.
Strip LED and driver 24Vdc to be ordered separately.
Suitable for ceiling thickness max. 15 mm.



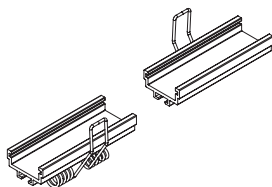
H 65
L Ltot
W 20

PROFONDITÀ DEL PROFILO PARI ALLO SPESSORE DEL CARTONGESSO DA 12,5 mm CHE CONSENTE IL MONTAGGIO SENZA INTERVENIRE SULLA STRUTTURA PORTANTE DEL CONTROSOFFITTO.

THE DEPTH OF THE PROFILE IS EQUAL TO THE THICKNESS OF THE 12.5 mm PLASTERBOARD ALLOWING INSTALLATION WITHOUT AFFECTING THE SUPPORTING STRUCTURE OF THE SUSPENDED CEILING.

CODE	<input type="checkbox"/>	<input checked="" type="checkbox"/>	L (mm)	Diffuser
105415.01		.96	2000	Opale / Opal

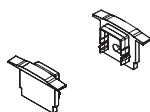
ACCESSORI ACCESSORIES



MOLLE DI FISSAGGIO (2 pz.)
Da prevedere in caso di utilizzo di sezioni di profilo tagliate in opera.

FIXING SPRINGS (2 pcs)
To be used for sections of profile cut on site.

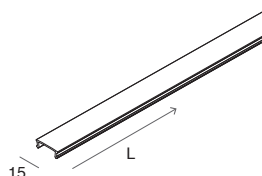
CODE	<input type="checkbox"/>	<input checked="" type="checkbox"/>	L (mm)	Diffuser
105419.99				Acciaio / Steel



TESTATE DI CHIUSURA (2 pz.)
Da prevedere in caso di utilizzo di sezioni di profilo tagliate in opera.

END CAPS (2pcs)
To be used for sections of profile cut on site.

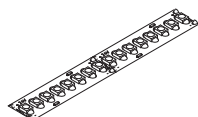
CODE	<input type="checkbox"/>	<input checked="" type="checkbox"/>	L (mm)	Diffuser
105417.01		.99		



SCHERMO OPALE 6 m
opzionale

OPAL SCREEN 6 m
optional

CODE	<input type="checkbox"/>	<input checked="" type="checkbox"/>	L (mm)	Diffuser
1018A3.99			6000	Opale / Opal



STRIP LED

Pag. 350

Per ottenere uniformità di luminanza nelle installazioni con schermo a vista, utilizzare strip LED 19,2W/m, 22W/m o 8,8W/m.

To achieve luminance uniformity when installed with clearly visible diffusers, the strip LED to be used is 19,2W/m, 22W or 8,8W/m.

PROFILED INCASSO H16

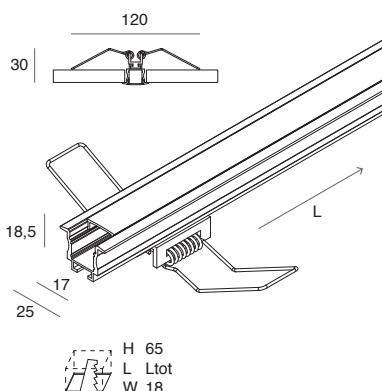
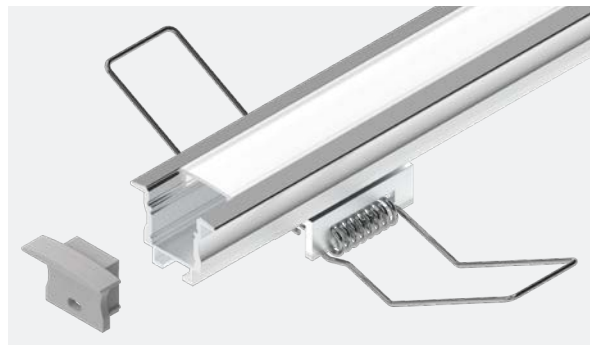
Profilo dissipante per Strip LED in lega di alluminio anodizzata naturale o verniciata bianca, testate di chiusura in polimero termoplastico, schermo diffusore ad inserimento a scatto in PMMA opale.
Schermo diffusore, testate di chiusura e n°2 molle di fissaggio scorrevoli sul profilo inclusi, Strip LED e alimentatore 24Vdc da ordinare a parte.
Idoneo per controsoffitto di spessore max. 15 mm.

Dissipating profile for Strip LED made of anodized aluminium alloy, natural finish or white powder coated, end caps made of thermoplastic polymer, screen made of opal finish PMMA.

Diffuser, end caps and n°2 sliding fixing springs included.

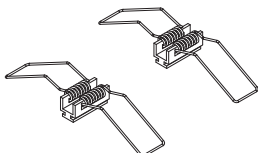
Strip LED and driver 24Vdc to be ordered separately.

Suitable for ceiling thickness max. 15 mm.



CODE	<input type="checkbox"/>	<input checked="" type="checkbox"/>	L (mm)	Diffuser
105405.01		.96	2000	Opale / Opal

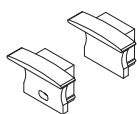
ACCESSORI ACCESSORIES



MOLLE DI FISSAGGIO (2 pz.)
Da prevedere in caso di utilizzo di sezioni di profilo tagliate in opera.

FIXING SPRINGS (2 pcs)
To be used for sections of profile cut on site.

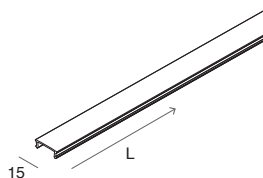
CODE		
105407.99		Acciaio / Steel



TESTATE DI CHIUSURA (2 pz.)
Da prevedere in caso di utilizzo di sezioni di profilo tagliate in opera.

END CAPS (2 pcs)
To be used for sections of profile cut on site.

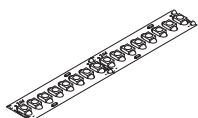
CODE	<input type="checkbox"/>	<input checked="" type="checkbox"/>
105406.01		.99



SCHERMO OPALE 6 m
opzionale

OPAL SCREEN 6 m
optional

CODE		L (mm)	
1018A5.99		6000	Opale / Opal



STRIP LED
Pag. 350

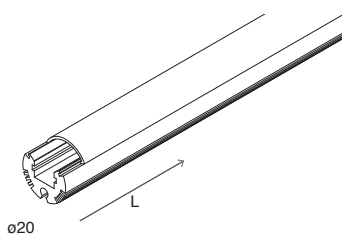
Per ottenere uniformità di luminanza nelle installazioni con schermo a vista, utilizzare strip LED 19,2W/m, 22W/m o 8,8W/m.

To achieve luminance uniformity when installed with clearly visible diffusers, the strip LED to be used is 19,2W/m, 22W or 8,8W/m.

PROFILED TONDO

Profilo dissipante per Strip LED in lega di alluminio verniciata bianca, testate di chiusura in polimero termoplastico, schermo diffusore ad inserimento a scatto in PMMA opale. Schermo diffusore e testate di chiusura inclusi. Kit di sospensione, staffe per installazione a parete, strip LED e alimentatore 24Vdc da ordinare a parte.

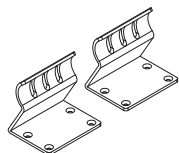
Dissipating profile for Strip LED made of white powder coated aluminium alloy, end caps made of thermoplastic polymer, screen made of opal finish PMMA. Diffuser and end caps included. Suspension kit, wall brackets, strip LED and driver 24Vdc to be ordered separately.



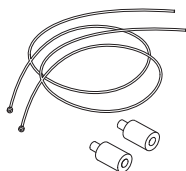
CODE	<input type="checkbox"/>	L (mm)	Diffuser
105401.01		2000	Opale / Opal

PROFILED TONDO

ACCESSORI ACCESSORIES



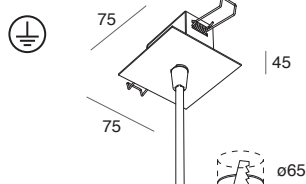
STAFFE PARETE (2 pz.)
WALL BRACKETS (2 pcs)

CODE **105402.01**

KIT SOSPENSIONE
Cavi in acciaio L 2000 mm
con terminale in ottone cromato.

CODE L (mm)**105403.99** 2000

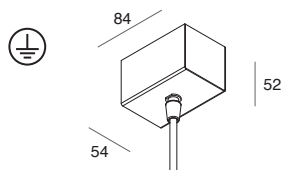
SUSPENSION KIT
Steel cables L 2000 mm
with tile pipes made of chromed brass.



KIT DI ALIMENTAZIONE PER SOSPENSIONE
rosone ad incasso in controsoffitto
di spessore da 5 a 15 mm.
Cavo con guaina bianca.

CODE L (mm) Cavo / Cable (mm²)**103319.01** 1200 3x0,75

POWER SUPPLY FOR SUSPENSION
recessed ceiling mounted canopy
for thickness from 5 up to 15 mm.
Cable with white sheath.



KIT DI ALIMENTAZIONE PER SOSPENSIONE
rosone a plafone.
Cavo con guaina bianca.

CODE L (mm) Cavo / Cable (mm²)**103320.01** 1200 3x0,75

POWER SUPPLY FOR SUSPENSION
ceiling mounted canopy.
Cable with white sheath.



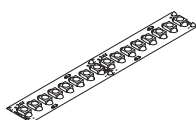
GIUNTO LINEARE (1 pz.)
LINEAR JUNCTION (1 pc)

CODE **105414.99**

TESTATE DI CHIUSURA (2 pz.)
Da prevedere in caso di utilizzo
di sezioni di profilo tagliate in opera.

CODE **105404.01**

END CAPS (2 pcs)
To be used for sections
of profile cut on site.



STRIP LED

Pag. 350

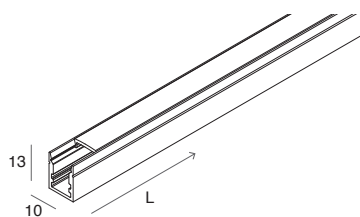
Per ottenere uniformità di luminanza nelle installazioni con schermo a vista, utilizzare strip LED 19,2W/m, 22W/m o 8,8W/m.

To achieve luminance uniformity when installed with clearly visible diffusers, the strip LED to be used is 19,2W/m, 22W or 8,8W/m.

PROFILED MICRO

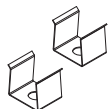
Profilo dissipante per Strip LED in lega di alluminio anodizzata naturale, testate di chiusura in polimero termoplastico, schermo diffusore ad inserimento a scatto in PMMA opale.
Schermo diffusore, testate di chiusura e n°4 staffe di fissaggio inclusi.
Strip LED e alimentatore 24Vdc da ordinare a parte.

Dissipating profile for Strip LED made of anodized aluminium alloy natural finish, end caps made of thermoplastic polymer, screen made of opal finish PMMA.
Diffuser, end caps and n°4 fixing brackets included.
Strip LED and driver 24Vdc to be ordered separately.



CODE	L (mm)	Diffuser
105411.96	2000	Opale / Opal

ACCESSORI ACCESSORIES



STAFFE DI FISSAGGIO (2 pz.)
Da prevedere in caso di utilizzo di sezioni di profilo tagliate in opera.

FIXING BRACKETS (2 pcs)
To be used for sections of profile cut on site.

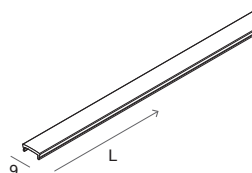
CODE	
105413.99	Acciaio / Steel



TESTATE DI CHIUSURA (2 pz.)
Da prevedere in caso di utilizzo di sezioni di profilo tagliate in opera.

END CAPS (2 pcs)
To be used for sections of profile cut on site.

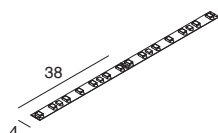
CODE	
105412.99	Grigio chiaro / Light gray



SCHERMO OPALE 6 m
opzionale

OPAL SCREEN 6 m
optional

CODE	L (mm)	
1018A2.99	6000	Opale / Opal



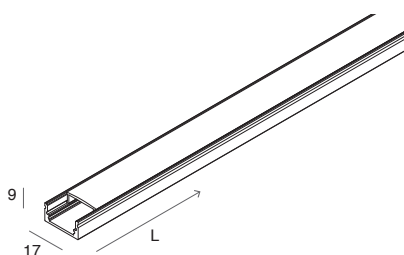
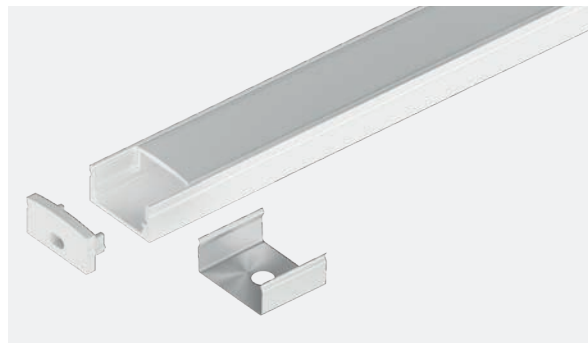
STRIP LED 4 mm
11,5W/m

CODE	L (mm)	LED COLOUR	FLUX/m	IP	CRI
100913.99	5000	2700K	1050	20	90
100914.99	5000	3000K	1113	20	90
100915.99	5000	4000K	1163	20	90

PROFILED H9

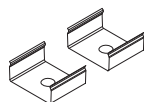
Profilo dissipante per Strip LED in lega di alluminio anodizzato naturale o verniciata bianca, testate di chiusura in polimero termoplastico, schermo diffusore ad inserimento a scatto in PMMA trasparente o opale. Schermo diffusore, testate di chiusura e n°4 staffe di fissaggio inclusi. Strip LED e alimentatore 24Vdc da ordinare a parte.

Dissipating profile for Strip LED made of anodized aluminium alloy, natural finish or white powder coated, end caps made of thermoplastic polymer, screen made of transparent or opal finish PMMA. Diffuser, end caps and n°4 fixing brackets included. Strip LED and driver 24Vdc to be ordered separately.



CODE	<input type="checkbox"/>	<input type="checkbox"/>	L (mm)	Diffuser
15201.01	<input type="checkbox"/>	<input type="checkbox"/>	2000	Opale / Opal
15202.01	<input type="checkbox"/>	<input type="checkbox"/>	2000	Traspar. / Transp.

ACCESSORI ACCESSORIES



STAFFE DI FISSAGGIO (2 pz.)
Da prevedere in caso di utilizzo
di sezioni di profilo tagliate in opera.

FIXING BRACKETS (2 pcs)
To be used for sections
of profile cut on site.

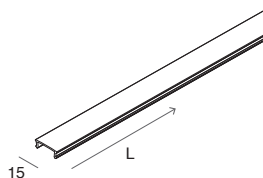
CODE		
15213.99	<input type="checkbox"/>	Acciaio / Steel
15213.00	<input type="checkbox"/>	Trasparente / Transparent



TESTATE DI CHIUSURA (2 pz.)
Da prevedere in caso di utilizzo
di sezioni di profilo tagliate in opera.

END CAPS (2 pcs)
To be used for sections
of profile cut on site.

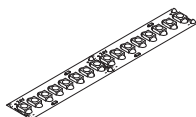
CODE	<input type="checkbox"/>	<input type="checkbox"/>
15206.01	<input type="checkbox"/>	.99



SCHERMO OPALE 6 m
opzionale

OPAL SCREEN 6 m
optional

CODE		L (mm)
1018A3.99	<input type="checkbox"/>	6000 Opale / Opal



STRIP LED

Pag. 350

Per ottenere uniformità di luminanza nelle installazioni con schermo a vista, utilizzare strip LED 19,2W/m, 22W/m o 8,8W/m.

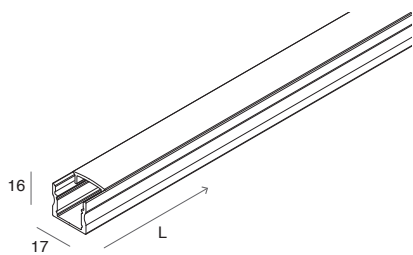
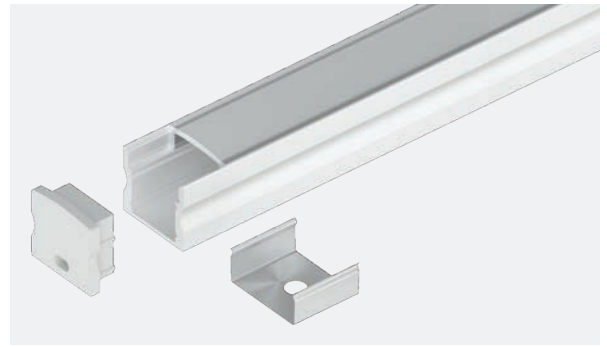
To achieve luminance uniformity when installed with clearly visible diffusers, the strip LED to be used is 19,2W/m, 22W or 8,8W/m.

PROFILED

H16

Profilo dissipante per Strip LED in lega di alluminio anodizzata naturale, testate di chiusura in polimero termoplastico, schermo diffusore ad inserimento a scatto in PMMA opale. Schermo diffusore, testate di chiusura e n°4 staffe di fissaggio inclusi. Strip LED e alimentatore 24Vdc da ordinare a parte.

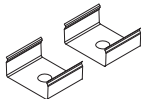
Dissipating profile for Strip LED made of anodized aluminium alloy natural finish, end caps made of thermoplastic polymer, screen made of opal finish PMMA. Diffuser, end caps and n°4 fixing brackets included. Strip LED and driver 24Vdc to be ordered separately.



CODE	L (mm)	Diffuser
16301.96	2000	Opale / Opal

ACCESSORI

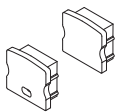
ACCESSORIES



STAFFE DI FISSAGGIO (2 pz.)
Da prevedere in caso di utilizzo di sezioni di profilo tagliate in opera.

FIXING BRACKETS (2 pcs)
To be used for sections of profile cut on site.

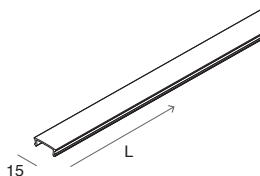
CODE	
15213.99	Acciaio / Steel
15213.00	Trasparente / Transparent



TESTATE DI CHIUSURA (2 pz.)
Da prevedere in caso di utilizzo di sezioni di profilo tagliate in opera.

END CAPS (2 pcs)
To be used for sections of profile cut on site.

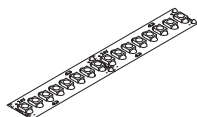
CODE	
16302.99	



SCHERMO OPALE 6 m
opzionale

OPAL SCREEN 6 m
optional

CODE	L (mm)	
1018A3.99	6000	Opale / Opal



STRIP LED

Pag. 350

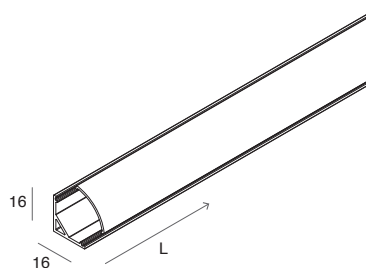
Per ottenere uniformità di luminanza nelle installazioni con schermo a vista, utilizzare strip LED 19,2W/m, 22W/m o 8,8W/m.

To achieve luminance uniformity when installed with clearly visible diffusers, the strip LED to be used is 19,2W/m, 22W or 8,8W/m.

PROFILED AD ANGOLO H16

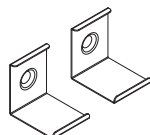
Profilo dissipante per Strip LED in lega di alluminio anodizzata naturale o verniciata bianca, testate di chiusura in polimero termoplastico, schermo diffusore ad inserimento a scatto in PMMA opale. Schermo diffusore, testate di chiusura e n°4 staffe di fissaggio inclusi. Strip LED e alimentatore 24Vdc da ordinare a parte.

Dissipating profile for Strip LED made of anodized aluminium alloy natural finish or white powder coated, end caps made of thermoplastic polymer, screen made of opal finish PMMA. Diffuser, end caps and n°4 fixing brackets included. Strip LED and driver 24Vdc to be ordered separately.



CODE	<input type="checkbox"/>	<input type="checkbox"/>	L (mm)	Diffuser
105408.01	<input type="checkbox"/>	<input checked="" type="checkbox"/>	2000	Opale / Opal

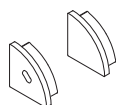
ACCESSORI ACCESSORIES



STAFFE DI FISSAGGIO (2 pz.)
Da prevedere in caso di utilizzo di sezioni di profilo tagliate in opera.

FIXING BRACKETS (2 pcs)
To be used for sections of profile cut on site.

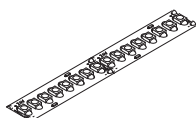
CODE	<input type="checkbox"/>	<input type="checkbox"/>	<input type="checkbox"/>	
105410.99	<input type="checkbox"/>	<input type="checkbox"/>	<input type="checkbox"/>	Acciaio / Steel



TESTATE DI CHIUSURA (2 pz.)
Da prevedere in caso di utilizzo di sezioni di profilo tagliate in opera.

END CAPS (2 pcs)
To be used for sections of profile cut on site.

CODE	<input type="checkbox"/>	<input type="checkbox"/>	<input type="checkbox"/>	
105409.01	<input type="checkbox"/>	<input type="checkbox"/>	<input type="checkbox"/>	.99



STRIP LED

Pag. 350

Per ottenere uniformità di luminanza nelle installazioni con schermo a vista, utilizzare strip LED 19,2W/m, 22W/m o 8,8W/m.

To achieve luminance uniformity when installed with clearly visible diffusers, the strip LED to be used is 19,2W/m, 22W or 8,8W/m.