

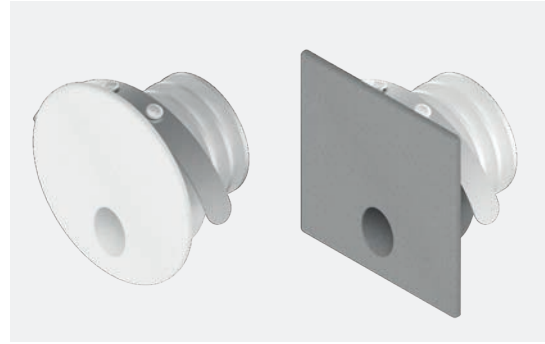


## MICROSTEP

Segnapasso per interni dal design minimale ed elegante. Quasi invisibile, MICROSTEP è perfetto per l'illuminazione di scale e la segnalazione di percorsi quali corridoi e illuminazione notturna di cortesia.

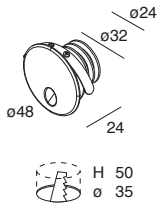
Path indicator for internal lighting of minimalistic and elegant design. Rather invisible, MICROSTEP is perfect for stair lighting and signaling paths such as corridors and courtesy night lighting.

# MICROSTEP



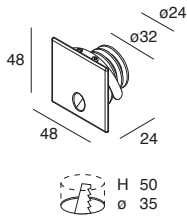
Apparecchio LED segnapasso per installazione ad incasso per cartongesso di 12,5 mm o per muratura. Cornice in lega di alluminio verniciata, dissipatore in lega di alluminio e molle in acciaio armonico. Accessorio per l'installazione in muratura e alimentatore elettronico 350mA o 700mA da ordinare a parte.

LED path indicator for wall recessed installation in 12.5 mm thickness plasterboard or in concrete. Frame made of painted aluminium alloy, dissipater made of aluminium alloy and clips made of harmonic steel. Wall plaque and electronic driver 350mA or 700mA to be ordered separately.



## MICROSTEP TONDO

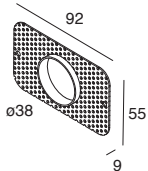
POWER	3000K	4000K
3W - 700mA	<b>106003.01</b> .03	<b>106004.01</b> .03



## MICROSTEP QUADRATO

POWER	3000K	4000K
3W - 700mA	<b>106001.01</b> .03	<b>106002.01</b> .03

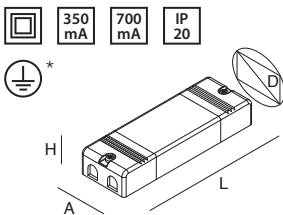
## ACCESSORI ACCESSORIES



**PLACCA MURALE**  
Per installazione su scatola di derivazione universale mod. 503 (non inclusa), da stuccare e rasare.

CODE
<b>A814K0001KK</b>

**WALL PLAQUE**  
To be fixed on a 503 universal connection box (not included), to plaster over and to level.



**ALIMENTATORE ELETTRONICO STABILIZZATO**  
220-240V 50/60Hz  
**ELECTRONIC STABILIZED DRIVER**  
220-240V 50/60Hz

CODE	POWER	A (mm)	D (mm)	H (mm)	L (mm)
<b>E903K0006KK</b>	8W - 350mA	35	42	21,5	78
<b>E903K0015KK</b>	15W - 350mA	34	40	19	115
<b>E907K0012KK</b>	12W - 700mA	34	40	19	115
<b>E907K0017KK</b>	17W - 700mA	37	47	28	128
* <b>E907K0030KK</b>	30W - 700mA	44	54	30	147

