



Made in Italy

C-1 MAX

40

C-1 MAX



Faretto LED per installazione ad incasso o semi-incasso a soffitto in cartongesso e per installazione a plafone in soffitto su cartongesso/muratura (solo per la versione GU10).

Disponibili versioni:

- a sorgente LED integrata, 3000K o 4000K, fascio 25° o 40°;
- a sorgente LED integrata, 3000K o 4000K con vetro diffusore opale
- a tensione di rete GU10 LED

Materiali

Corpo in cartongesso
Dissipatore in lega di alluminio anodizzata;
Ottica in policarbonato con deposizione in alto vuoto di alluminio super puro 99% speculare;
Schermo di protezione ottica in PC trasparente;
Vetro opale temprato, sabbiato solo da un lato.

Cablaggi

Alimentazione elettronica integrata 220-240V 50/60Hz, dimmerabile TRIAC.
A tensione di rete per versione GU10

LED downlight for recessed or semi-recessed ceiling installation as well as for ceiling installation on plasterboard/concrete ceilings (only for GU10 version).

Available options:

- integrated LED source, 3000K or 4000K, with 25° or 40° optics;
- integrated LED source, 3000K or 4000K and opal screen;
- standard voltage GU10 LED

Materials

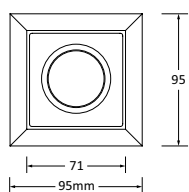
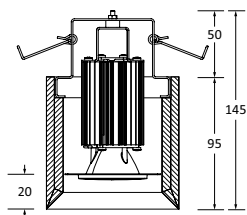
Plasterboard body
Dissipater in anodized aluminium alloy;
Polycarbonate optics with high vacuum deposition of 99% mirror extra pure aluminum;
Protection screen with transparent PC optics;
Tempered opal glass version with, sand blasted on one side only.

Wiring

Electronic driver, 220-240V 50/60Hz, TRIAC dimmable included.
Standard voltage for GU10 LED version.





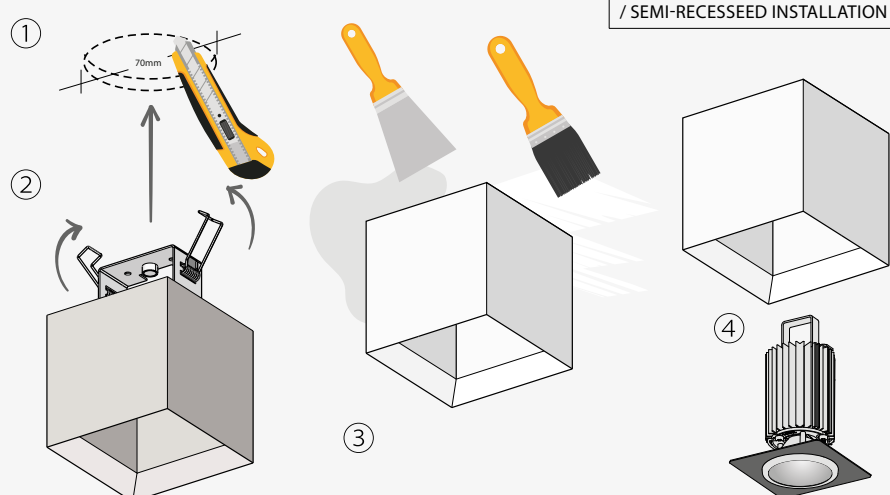


C-1 MAX downlight LED
in cartongesso. Sorgente LED e alimentazione elettronica 220-240V 50/60Hz incluse. Dimmerabile TRIAC

C-1 MAX downlight LED
made of plasterboard. LED source and electronic driver 220-240V 50/60Hz included. TRIAC dimmable

3000K					
Codice/Code	W led		L (mm)	Flusso apparecchio/Fixture flux (lm)	Prezzo/Price
101809.99	1x10,5	fascio/be am 25°	95	1145	€ 113,00
101811.99	1x10,5	fascio/beam 40°	95	1155	€ 113,00
4000K					
Codice/Code	W led		L (mm)	Flusso apparecchio/Fixture flux (lm)	Prezzo/Price
101810.99	1x10,5	fascio/beam 25°	95	1180	€ 113,00
101812.99	1x10,5	fascio/beam 40°	95	1180	€ 113,00

INSTALLAZIONE SEMI-INCASSO / SEMI-RECESSEED INSTALLATION



INSTALLAZIONE SEMI-INCASSO / SEMI-RECESSEED INSTALLATION

- ① PRATICARE UN FORO NEL CARTONGESSO DIAMETRO 70MM / CUT A HOLE IN THE PLASTERBOARD DIAMETER 70mm
- ② INSERIRE IL CORPO IN CARTONGESSO DEL FARETTO ATTRAVERSO IL FORO ALZANDO LE MOLLE / INSERT THE FIXTURE BODY MADE OF PLASTERBOARD INTO THE HOLE, WHILE RAISING THE SPRINGS
- ③ STUCCARE, RASARE E VERNICIARE / PLAST, SKIM AND PAINT
- ④ INSERIRE LA SORGENTE LED NEL CORPO IN CARTONGESSO / INSERT THE LED SOURCE INTO THE PLASTERBOARD ITEM




C-1 MAX downlight LED GU10

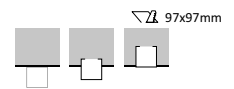
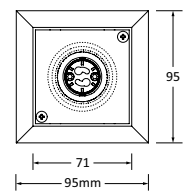
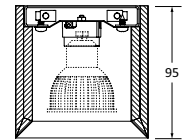
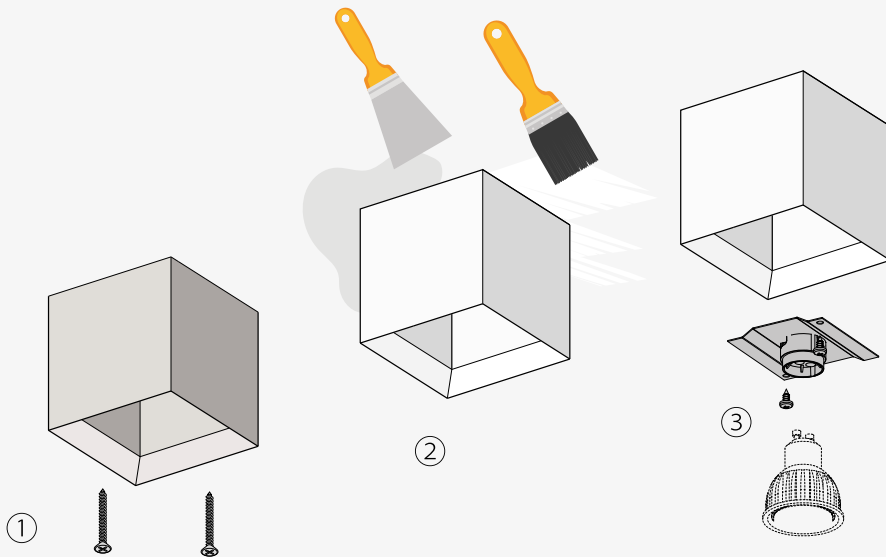
in cartongesso. A tensione di rete, sorgente non inclusa

C-1 MAX downlight LED GU10

made of plasterboard. Standard voltage, lamp not included

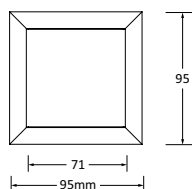
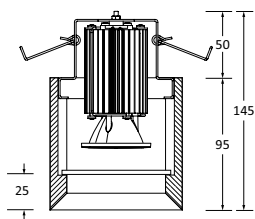
Codice/Code	W led		L (mm)	Prezzo/Price
101859.99	1x8 MAX	GU10	95	€ 54,50

INSTALLAZIONE PLAFONE (GU10)
/ CEILING INSTALLATION (GU10)



INSTALLAZIONE PLAFONE (GU10) /
CEILING INSTALLATION (GU10)

- ①_FISSARE IL CORPO IN CARTONGESSO DEL FARETTO AL SOFFITTO CON VITI E TASSELLI / FIX THE FIXTURE BODY IN PLASTERBOARD TO THE CEILING WITH SCREWS AND SCREW ANCHORS
- ②_ STUCCARE, RASARE E VERNICIARE / PLAST, SKIM AND PAINT
- ③_ INSERIRE IL PORTALAMPADA NEL CORPO IN CARTONGESSO E INFINE LA SORGENTE / INSERT THE LAMP SUPPORT INTO THE PLASTERBOARD ITEM AND THE LIGHT SOURCE

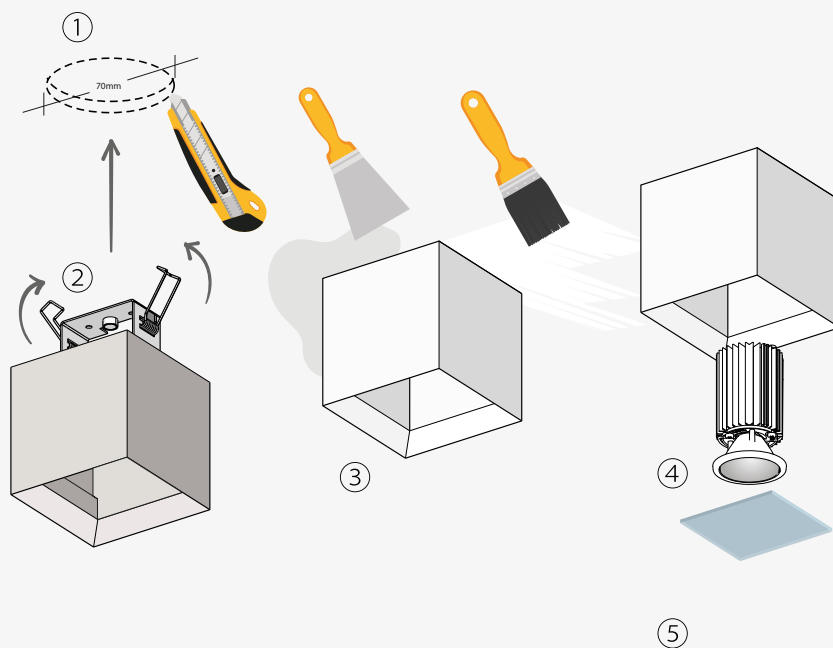


C-1 MAX downlight LED emissione diffusa
in cartongesso. Schermo in vetro sabbia temperato. Sorgente LED e alimentazione elettronica 220-240V 50/60Hz incluse

C-1 MAX downlight LED diffused emission
made of plasterboard. Tempered sand blasted glass screen. LED source and electronic driver 220-240V 50/60Hz included

3000K				
Codice/Code	W led	L (mm)	Flusso apparecchio/Fixture flux (lm)	Prezzo/Price
101813.99	1x10,5	95	852	€ 117,75
4000K				
Codice/Code	W led	L (mm)	Flusso apparecchio/Fixture flux (lm)	Prezzo/Price
101814.99	1x10,5	95	859	€ 117,75

**INSTALLAZIONE SEMI-INCASSO CON VETRO /
SEMI-RECESSEED INSTALLATION WITH GLASS**



**INSTALLAZIONE SEMI-INCASSO CON VETRO /
SEMI-RECESSEED INSTALLATION WITH GLASS**

- ① PRATICARE UN FORO NEL CARTONGESSO DIAMETRO 70MM / CUT A HOLE IN THE PLASTERBOARD DIAMETER 70mm
- ② INSERIRE IL CORPO IN CARTONGESSO DEL FARETTO ATTRAVERSO IL FORO ALZANDO LE MOLLE / INSERT THE FIXTURE BODY MADE OF PLASTERBOARD INTO THE HOLE, WHILE RAISING THE SPRINGS
- ③ STUCCARE, RASARE E VERNICIARE / PLAST, SKIM AND PAINT
- ④ INSERIRE LA SORGENTE LED NEL CORPO IN CARTONGESSO / INSERT THE LED SOURCE INTO THE PLASTERBOARD ITEM
- ⑤ INSERIRE IL VETRO IN APPOGGIO / INSERT THE GLASS

**INSTALLAZIONE INCASSO /
RECESSEED INSTALLATION**

- ① PRATICARE UN TAGLIO 97X97mm NEL CARTONGESSO / CUT A SQUARE HOLE IN THE PLASTERBOARD 97X97mm
- ② DISPORRE LA COLLA PER CARTONGESSO SUI LATI E INSERIRE IL CORPO IN CARTONGESSO DEL FARETTO ATTRAVERSO IL FORO E LASCIARE ASCIUGARE SOSTENENDO CON DUE VITI / PUT SOME GLUE FOR PLASTERBOARD ON THE SIDES AND INSERT THE FIXTURE BODY MADE OF PLASTERBOARD INTO THE HOLE AND LET DRY SUPPORT WITH TWO SCREWS
- ③ STUCCARE, RASARE E VERNICIARE / PLAST, SKIM AND PAINT

**INSTALLAZIONE INCASSO /
RECESSEED INSTALLATION**

